

PRICE LIST 2023

MORELO PALACE ALKOVEN



FIRST CLASS REISEMOBILE.
MADE IN GERMANY.

THE NEW MORELO PALACE ALKOVEN

Because we listen to our customers. We have fulfilled a popular request and are finally offering the MORELO PALACE in an alcove version. The new model on IVECO Daily 70 C 18 chassis impresses with the excellent, MORELO-typical finishing, perfect space utilisation and numerous technical refinements.

Five layouts, two with bicycle and three other with scooter garage. Three layouts have, in addition to the alcove bed with its high-quality multi-zone mattress, a spacious double bed (M-bed / L-bed) in the rear, two other layouts have a cosy seating area there instead. On request MORELO offers additional belt seats, so that for the first time up to 6 people can travel in a MORELO. Owners of the C1 driving licence should be particularly pleased about the premiere of the MORELO PALACE ALKOVEN, because its permissible gross weight is just under 7.5 tonnes.

Bodywork in typical MORELO construction. Top insulation. Generous feeling of space. Roof and side walls of the MORELO PALACE ALKOVEN have 38 mm RTM insulation, the GRP roof is hail-resistant. The spacious double floor is heatable and immediately impresses with a height of 420 mm. This not only offers plenty of space for the large fresh and waste water tanks, but also additional storage space. The excellent insulation in combination with the hot-water gas central heating with 5,500 Watt and the real floor heating make the MORELO PALACE ALKOVEN a real all-year-round motorhome.

Well thought-out bathroom, comfortable kitchen, underfloor heating. Also inside the new one is a real MORELO: step in and you feel at home immediately. Like the entire living area, the bathroom offers an underfloor heating throughout. The ensemble includes a spacious washbasin with seamlessly moulded sink, a mirrored cabinet, a separate real glass shower and a ceramic toilet with a large fixed tank. A wardrobe with LED lighting completes the inviting bathroom arrangement.

HIGHLIGHTS & HARD FACTS



Often only an option with others, but standard with MORELO. In keeping with our idea of a First Class motorhome the basic price of the MORELO PALACE ALKOVEN already includes many features as a standard.

DRIVING COMFORT AND SAFETY

- + Automatic tyre pressure monitoring
- + Full LED low and high beam headlights with LED daytime running lights
- + Luxury dashboard with leather steering wheel and multifunctional buttons
- + Original luxury driver and passenger seats, 3-way adjustable, suspended, heatable
- + Air suspension on rear axle

FOR YOUR OPTIMAL FEEL-GOOD AMBIANCE

- + Engine heat exchanger to use the engine heat for heating the living area
- + Air conditioning in the cab
- + Comfortable underfloor heating in living area and bathroom
- + Towel dryer radiator in the bathroom, thermostatically adjustable
- + Rear garage heating circuit, adjustable
- + Heated partition wall to the driver's cabin to provide cosy warmth in the living area also in wintertime

CABINET CONSTRUCTION

- + Entrance door "TOP-Class" extra wide with code lock & remote control, window with blackout blind & fly screen
- + Garage door with electric release on driver and passenger side

FOR A LIGHT-FLOODED ROOM

- + Double glazed panoramic roof window in living area
- + Toilet room window
- + Roof hatch
- + All windows with flyscreen and blackout pleated blinds

AND FOR EVEN MORE LIVING COMFORT

- + Microwave above compressor fridge
- + Extendable, free-floating table (not with rear seating groups)
- + Ceramic toilet with 250 litre fixed tank





PALACE A 80 RL



incl. bicycle garage

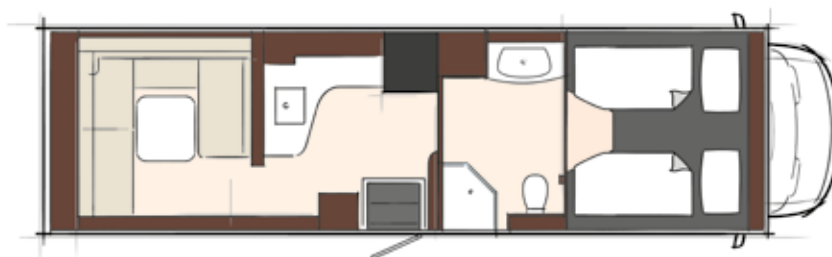
IVECO Daily
70 C 18

ENGINE	Serial diesel engine (cylinders)	4
	Cubic capacity (litres)	3,0
	Max. power (KW/HP)	132 / 180
	Max. torque (Nm)	430
	Emission class	EURO VI e
WEIGHT	Technically permissible max. weight (kg) ¹	7.490
	Mass in running order (kg) ¹	5.330
	Payload (kg) ¹	2.160
	Tow load with fixed / removable ball head (kg)	3.500
	Permissible max. train weight w. fixed / removable ball head (kg)	10.700
DIMENSIONS	Total length (mm)	8.070
	Total width (mm)	2.400
	Total height (mm)	3.500
	Wheel base (mm)	4350 / 4.100 ³
	Seating area (mm)	1.600 - 1.800 x 2.100
	Couch, right (mm)	-
	Rear bed (mm)	-
	Alcove bed (mm)	2 x 2.080 x 1.060
	Height above alcove mattress (mm)	740
	Garage door on both sides (h x w in mm)	ca. 1.080 x 850
€		222.850,00 €

Prices in Euro (incl. 20% VAT)

1) see back 3) Depending on the front axle load and equipment

PALACE A 88 DL



incl. bicycle garage

IVECO Daily
70 C 18

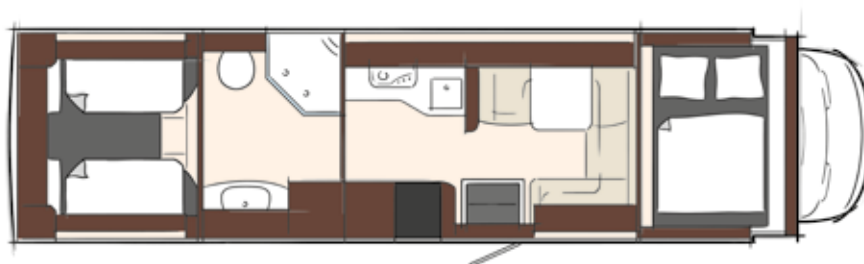
ENGINE	Serial diesel engine (cylinders)	4
	Cubic capacity (litres)	3,0
	Max. power (KW/HP)	132 / 180
	Max. torque (Nm)	430
Emission class		EURO VI e
WEIGHT	Technically permissible max. weight (kg) ¹	7.490
	Mass in running order (kg) ¹	5.645
	Payload (kg) ¹	1.845
	Tow load with fixed / removable ball head (kg)	3.500
	Permissible max. train weight w. fixed / removable ball head (kg)	10.700
DIMENSIONS	Total length (mm)	8.970
	Total width (mm)	2.400
	Total height (mm)	3.500
	Wheel base (mm)	4.750
	Seating area (mm)	2.000 x 1.400 - 2.100
	Couch, right (mm)	-
	Rear bed (mm)	-
	Alcove bed (mm)	2 x 2.080 x 1.060
	Height above alcove mattress (mm)	740
	Garage door on both sides (h x w in mm)	ca. 1.080 x 850
		230.900,00 €

Prices in Euro (incl. 20% VAT)

¹⁾ see back

Images and descriptions may contain options that are subject to surcharge.

PALACE A 94 L



incl. scooter garage

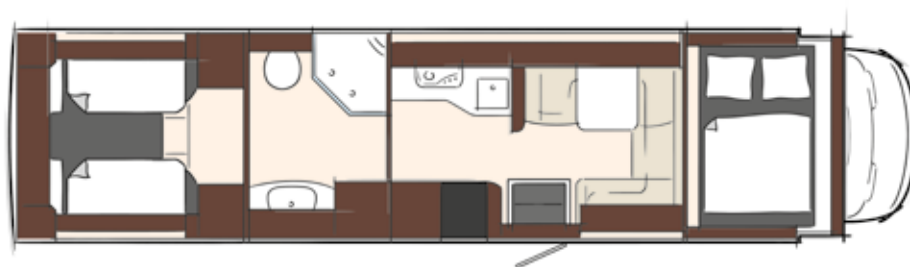
IVECO Daily
70 C 18

ENGINE	Serial diesel engine (cylinders)	4
	Cubic capacity (litres)	3,0
	Max. power (KW/HP)	132 / 180
	Max. torque (Nm)	430
Emission class		EURO VI e
WEIGHT	Technically permissible max. weight (kg) ¹	7.490
	Mass in running order (kg) ¹	5.785
	Payload (kg) ¹	1.705
	Tow load with fixed / removable ball head (kg)	3.500
	Permissible max. train weight w. fixed / removable ball head (kg)	10.700
DIMENSIONS	Total length (mm)	9.590
	Total width (mm)	2.400
	Total height (mm)	3.500
	Wheel base (mm)	5.100 / 5.000
	Seating area (mm)	1.000 x 650
	Couch, right (mm)	1.200 x 650
	Rear bed (mm)	2 x 2.000 x 1.060 / 1.110
	Alcove bed (mm)	2.100 X 1.600
	Height above alcove mattress (mm)	740
Garage door on both sides (h x w in mm)	1.230 X 1.120	
		238.000,00 €

Prices in Euro (incl. 20% VAT)

¹⁾ see back

PALACE A 98 LS



incl. scooter garage

IVECO Daily
70 C 18

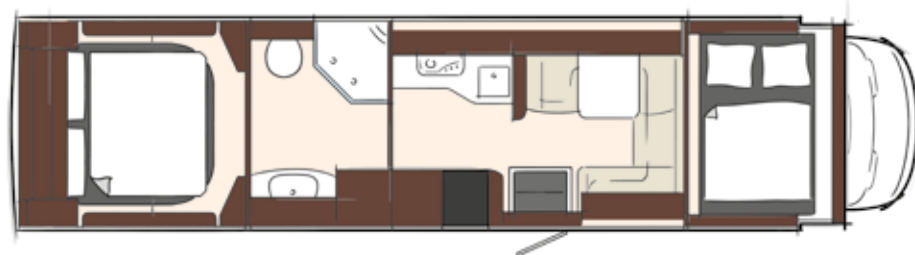
ENGINE	Serial diesel engine (cylinders)	4
	Cubic capacity (litres)	3,0
	Max. power (KW/HP)	132 / 180
	Max. torque (Nm)	430
Emission class		EURO VI e
WEIGHT	Technically permissible max. weight (kg) ¹	7.490
	Mass in running order (kg) ¹	5.925
	Payload (kg) ¹	1.565
	Tow load with fixed / removable ball head (kg)	3.500
	Permissible max. train weight w. fixed / removable ball head (kg)	10.700
DIMENSIONS	Total length (mm)	9.990
	Total width (mm)	2.400
	Total height (mm)	3.500
	Wheel base (mm)	5.250
	Seating area (mm)	1.000 x 650
	Couch, right (mm)	1.200 x 650
	Rear bed (mm)	2 x 2.000 x 1.060 / 1.110
	Alcove bed (mm)	2.100 x 1.600
	Height above alcove mattress (mm)	740
	Garage door on both sides (h x w in mm)	1.230 X 1.120
		245.450,00 €

Prices in Euro (incl. 20% VAT)

¹⁾ see back

Images and descriptions may contain options that are subject to surcharge.

PALACE A 98 M



incl. scooter garage

IVECO Daily
70 C 18


ENGINE	Serial diesel engine (cylinders)	4
	Cubic capacity (litres)	3,0
	Max. power (KW/HP)	132 / 180
	Max. torque (Nm)	430
	Emission class	EURO VI e
WEIGHT	Technically permissible max. weight (kg) ¹	7.490
	Mass in running order (kg) ¹	5.925
	Payload (kg) ¹	1.565
	Tow load with fixed / removable ball head (kg)	3.500
	Permissible max. train weight w. fixed / removable ball head (kg)	10.700
DIMENSIONS	Total length (mm)	9.990
	Total width (mm)	2.400
	Total height (mm)	3.500
	Wheel base (mm)	5.250
	Seating area (mm)	1.000 x 650
	Couch, right (mm)	1.200 x 650
	Rear bed (mm)	2 x 2.000 x 1.060 / 1.110
	Alcove bed (mm)	2.100 x 1.600
	Height above alcove mattress (mm)	740
	Garage door on both sides (h x w in mm)	1.230 X 1.120
	245.450,00 €	

Prices in Euro (incl. 20% VAT)

¹⁾ see back

STANDARD EQUIPMENT MORELO PALACE ALKOVEN

ENGINE . CHASSIS . DRIVING SAFETY . COCKPIT

	BASE VEHICLE MORELO PALACE ALKOVEN	IVECO Daily 7,49 t
ENGINE	Turbo diesel engine, with rear wheel drive	3,0 litres / 132 KW / 180 HP
	Fuel tank, in litres	90
	Emission class EURO VI e	AdBlue, 30 litres
	Manual transmission	6-gear
	Alternator	14 V / 250 A / 3.080 W
CHASSIS	All season tires (Continental Vanco Four Season)  M+S	225 / 75 R 16
	Disc brakes, on front and rear axle	■
	Breakdown set, with warning triangle, first-aid kit, warning light, wheel chock and tire pressure kit	■
	Air suspension on rear axle	■
DRIVING SAFETY	Electronic anti-lock braking system (ABS)	■
	Traction control system (ASR)	■
	Electronical Stability Program (ESP)	■
	Cruise control	■
	Active tire pressure monitoring system	■
COCKPIT	Original luxury driver's cab seats, three adjustable settings, suspended, heatable	
	Steering wheel, adjustable in height and angle	
	Electric driver's cab side windows	
	Luxury dashboard with leather steering wheel incl. multifunctional buttons	
	Original outside mirrors and windscreen wiper system	
	Sockets, 2 x USB charging	
	Driver and passenger airbag	
	Air conditioning in driver's cab	

■ Standard Equipment

STANDARD EQUIPMENT MORELO PALACE ALKOVEN

LIGHTS . STRUCTURE . LIVING ROOM + BEDROOM

LIGHTS	Full LED low and main beam with LED daytime running lights
	Fog lights
	LED rear lights, with chrome ring
STRUCTURE	Side walls and roof are 42 mm thick, 38 mm of which consists of closed-cell RTM hard foam
	Aluminium side bars on the roof, with rainwater channels to help keeping side walls clean
	Side walls in ALU-RTM-ALU sandwich design, smooth and high-gloss
	Roof in GRP-RTM-ALU sandwich design, hail protection and low heat conductivity
	Underfloor in GRP-RTM-GRP sandwich design, robust, corrosion-free, no timber used
	Cold-bridge-free wall joint technology, using highly compressed rigid PU profiles
	Garage door with electrical unlocking
	Lightning protection, Faraday cage
	Heatable double floor, 420 mm high for PALACE, side access via external flaps
	"Top Class" entrance door with window, extra large, electric with code lock and remote control, blind and flyscreen
	Interior entrance step, heated, with two incorporated pull-out drawers
	Exterior entrance step, 2-step, electrically extendable with safety circuit
	Rear garage with doors to the right and to the left, floor rails with lashing eyelets and 230 V socket
	Rear wall with fibreglass compound sandwich design, PU foam core
	Plastic windows in living area, double-glazed and tinted, with pleated blackout blind and flyscreen
	Storage space flaps thermally separated with electrical release, carpeted inside
	Entirely wood-free exterior structure
	Alcove hood and lateral skirting, from highly sturdy two-layered fibreglass compound
	External adhesives in black
	Sturdy handle for easy entry, backlighted
Heated living room separation wall with access to the driver's cab and sliding door	
LIVING ROOM + BEDROOM	Floor covering made from easy-care, high-grade vinyl
	Flat living area floor, from the rear to the driver's cabin
	2 steps inc. storage space from living room to driver's cab
	Skylight, with flyscreen and pleated blackout blind in the bedroom
	Double-glazed, panoramic roof window with flyscreen and pleated blackout blind in the living area
	Lighting canopies with LED spots incl. indirect lighting, dimmable
	Beds with comfortably suspended multi-zone mattress and adjustable head part
	Foldable alcove bed with multizone mattress
	Alcove side windows
	Skylight, with flyscreen and pleated blackout blind in the alcove

STANDARD EQUIPMENT MORELO PALACE ALKOVEN

LIVING ROOM + BEDROOM . KITCHEN . BATHROOM

LIVING ROOM + BEDROOM	Sliding curtain for darkening the alcove bed
	Wardrobes with LED lighting
	Microfibre upholstery
	Seating group with ergonomic upholstery, comfortable multi-layer design with diol-based padding and zip fasteners
	Extensible, sturdy table, laminated (94 L / 98 LS / 98 M)
	Ceiling high double pull-out furniture at the entrance
	Comfortable, generous seating group with cushion insert to close the access to the driver's cabin (94 L / 98 LS / 98 M)
	Sockets in the living area and in the bedroom
	Wall panelling with colour-coordinated carpet
	Elegant pleated curtains
KITCHEN	177 litres compressor refrigerator with separate freezer compartment, dark-mirrored fridge door
	Microwave oven with grill and hot-air function
	Morelosan kitchen worktop with seamlessly integrated wash/waste bowl and domestic drains
	3-flame stainless steel gas cooker, installed countersunk with automatic ignition and glass cover
	Single-lever mixer tap, chrome
	Drawers with super-soft closing and cutlery insert
	Pull-out waste bin with two removable containers
	Skylight, with flyscreen and pleated blackout blind
	LED spots, in lighting canopy
	Sockets 2 x 230 V
BATHROOM	Skylight, with flyscreen and pleated blackout blind
	Washstand, with seamlessly integrated sink, push open valve and domestic drain
	Extensible single-lever mixer tap, chrome
	Soap dispenser, cup holder and towel hook
	Lighted mirror closet
	Separate shower, with wall rail, height-adjustable showerhead and drip rail
	Toilet window, with flyscreen and pleated blackout blind with premium bathroom
	Ceramic toilet bowl with ca. 250 litres toilet tank
	Toilet paper holder and toilet brush
	Spacious wardrobe with LED lighting
LED spots	
Sockets 2 x 230 V	

STANDARD EQUIPMENT MORELO PALACE ALKOVEN

SUPPLY . ELECTRONICS . CONTROL PANEL

SUPPLY

Gas bottle compartment, for 2 x 11 kg gas bottles side by side, with gas controller, gas leak protection, gas filter and automatic switchover

5.500 W hot water gas central heating, with thermostat control, automatic ventilation valve and backflow shut-off

Electrical heating element, 230 V, up to 3.000 W

Engine heat exchanger, for using engine calories to heat up the living area while traveling

Floor heating in living area and bathroom

Heat regulator in bedroom and alcove

Heat regulating thermostat in rear garage

Towel dryer radiator in bathroom, with thermostat control

Integrated hot water boiler, serving all tapping points

Ca. 360 litres fresh water tank, ca. 250 litres wastewater tank and ca. 250 litres toilet tank, situated in the heated double floor

Emptying of wastewater and toilet tank, via drain tap with large cross section in heated double floor and drain hose with bayonet connection

Domestic style wastewater pipes

Flushing connections for wastewater tank and toilet tank

Central pressure water supply

ELECTRONICS

2 x 230 V sockets in the garage

12 V socket in the electrical compartment

230 V CEE connection, with insulated floor inlet

140 Ah gel battery in intermediate floor including battery monitoring system with overloading and total discharge protection

Automatic charger, electronically controlled, with battery temperature sensor, maximum charge rate of 25 A

CONTROL PANEL

Central control and monitoring panel, with colour touch screen

Shut-off function for on-board electrical system, in case of undervoltage/overheating

On-board electronics, microprocessor-controlled

Buttons for switching on/off, lighting, water pump and special equipment, including main switch for all consumers

Alarm devices, for 'wastewater tank full', 'step extended', 'fresh water tank empty', 'reserve gas bottle in use' and diverse others

LCD control panel for monitoring of external and internal temperature, external mains supply, parallel battery circuit, battery voltage of the vehicle and leisure batteries

LCD control panel for monitoring of wastewater tank and fresh water tank levels, gas level (when a gas tank is fitted), charging and discharging amperage, date and time with alarm clock

SPECIAL EQUIPMENT MORELO PALACE ALKOVEN

STRUCTURE . KITCHEN

	Item / Weight ¹		all models	
STRUCTURE	022029 / 60	Electrically operated roof awning 6.0 m, with LED lighting, dimmable with remote control ²	3.065,00 €	
	022051 / 03	LED lighting underneath of roof profile on driver's side, dimmable with remote control	795,00 €	
	025244 / 08	Midi roof window in bedroom (instead of standard mini heki)	795,00 €	
	025092 / 13	Panoramic roof window Heki 3 in bedroom (instead of standard mini heki)	1.400,00 €	
	025106 / 26	Double panoramic roof window, 2 x Heki 3, in living room	1.705,00 €	
	037500 / 07	Furniture safe with electronic locking, motor-driven locking system, 8,3 l volume	395,00 €	
	020320 / 02	Carbon look exterior	1.905,00 €	
	020110 / 12	Aluminium chequer plate on the rear garage floor	695,00 €	
	031945 / 05	Double floor lighting	695,00 €	
	021031 / 03	Parking sensors in the rear bumper	895,00 €	
	021022 / 03	Parking sensors in the front bumper	895,00 €	
	036112 / 03	Clothes rail in rear garage (only for scooter garage)	290,00 €	
	031061 / 10	Central locking of external storage flaps except for gas bottle compartment and entrance door	2.210,00 €	
	017433 / 01	Bumper painted in vehicle colour	2.015,00 €	
	KITCHEN	043105 / 15	Mineral material kitchen worktop, mat finish, flush sink covers, in various designs	1.505,00 €
043030 / 30		Luxury dishwasher, pull-out underneath cooker (230 V via mains connection, not in combination with double pull-out drawers)	2.310,00€	
043275 / 05		Double pull-out drawers underneath cooker instead of door (not in combination with dishwasher)	495,00 €	
043268 / 05		Nespresso coffee machine, with shelf and 230 V socket ²	495,00 €	
025167 / 05		Extractor fan instead of standard mini heki	795,00 €	
045565 / 20		177 litres AES refrigerator with separate freezer compartment, dark-mirrored fridge door, automatic and manual energy selection (instead of the standard)	1.505,00 €	
043470 / 08		SILWY glass assortment: magnetic wine and sparkling wine glasses in the dinette upper cabinet and coffee cups, whiskey and water glasses in the kitchen upper cabinet, 4 of each with MORELO logo (instead of the standard)	1.100,00 €	

Prices in Euro (incl. 20% VAT)

¹) weight in kg ²) only combined with Electrical Package

SPECIAL EQUIPMENT MORELO PALACE ALKOVEN

LIVING ROOM . BEDROOM . BATHROOM

	Item / Weight ¹⁾		all models
LIVING ROOM	050600 / 05	Wall and ceiling covering in smooth finish, with artificial leather	1.805,00 €
	036600 / 0	Decor change for furniture fronts (price per unit, position and number may be freely selected, not for curved overhead locker doors)	100,00 €
	035987 / 45	Seat belts for 2 persons in the direction of travel	1.000,00 €
	035991 / 90	Seat belts for 4 persons, two in the direction of travel and two seat belts opposite the direction of travel with lap belt	1.805,00 €
	035988 / 45	Seat belts for 2 persons in the rear seating group (three-point belt)	3.015,00€
	042204 / 07	Height-adjustable table column, with extra cushion insert (only for rear seating group)	895,00 €
	042899 / 0	CASHMERE style: Wood decor in Aralia with light grey furniture fronts	1.000,00€
BEDROOM	036242 / 05	Rear bed with multizone mattress and "watergel" topping	595,00 €
	036229 / 05	Alcove bed with multizone mattress and "watergel" topping	1.000,00 €
	036300 / 07	Rear bed with lying surface over the entire width, for L-layouts, incl. EvoPore mattress with "watergel" topping	1.605,00 €
	036302 / 40	Rear bed with lying surface over the entire width, for M-layouts, with overhead lockers like in L-version, incl. multi-zone EvoPore mattress with "watergel" topping	2.610,00 €
BATHROOM	036130 / 0	Ceramic toilet bowl for cassette toilet, including SOG toilet ventilation (instead of standard fixed-tank toilet)	no surcharge
	034216 / 15	Additional 6 litres hot water boiler (ALDE Flow)	1.100,00 €
	036088 / 13	EMPIRE rain shower (reduced headroom)	1.000,00 €
	036071 / 44	Luxury bathroom with separate toilet area, window and mini heki (not available for models with rear seating group)	3.115,00 €
	036068 / 0	Towel radiator in chrome finish instead of white	895,00 €
	036033 / 03	Extensible shower next to the toilet	395,00 €
	036025 / 06	Raised toilet seat (ca. 50 mm) for fixed-tank toilets	395,00 €
	025268 / 05	Extractor fan instead of standard mini heki	895,00 €

Prices in Euro (incl. 20% VAT)

¹⁾ weight in kg

Images and descriptions may contain options that are subject to surcharge.

SPECIAL EQUIPMENT MORELO PALACE ALKOVEN

SUPPLY . UPHOLSTERY + DECORATION . SERVICE

	Item / Weight ¹⁾	all models	
SUPPLY	034225 / 01	Central filter unit for cleaning and decalcifying the fresh water supply	1.000,00 €
	034202 / 03	External shower on the driver's side in front of the rear axle	355,00 €
	018143 / 02	Pressure sensors for precise measuring of fresh water and wastewater tank levels	695,00 €
	018142 / 03	Pressure sensors for precise measuring of fresh water, wastewater and toilet tank levels	1.000,00 €
	018145 / 02	Bluetooth box for precise measuring of levels (only in combination with pressure sensors)	695,00 €
	033022 / 02	Gas alarm, to monitor living area	495,00 €
	033026 / 03	External gas connection, on side wall at passenger's side	290,00 €
	033004 / 88	70 litres gas tank, with remote filling in the side wall and level indicator in control panel display	2.715,00 €
	033005 / 111	120 litres gas tank, with remote filling in the side wall and level indicator in control panel display (if technically possible)	2.915,00 €
	023103 / 77	2.600 W fuel generator with 10 litres petrol tank, fixed installation (if technically possible)	5.235,00 €
	034203 / 20	Fresh water tanks 2 x ca. 250 litres instead of standard tank (reduced storage space in the double floor)	695,00 €
	035990 / 05	Greywater pump for transfer of wastewater into the toilet tank	1.000,00 €
	036024/03	Electrical opening for waste water	895,00 €
	036024-01/03	Electrical opening for toilet tank	895,00 €
	036091/01	Camera next to electrical openings	1.300,00 €
UPHOLSTERY + DECORATION			
	050100 / 0	Microfibre upholstery, in variety of patterns	Serial standard
	050524 / 20	Fabric-Leather "Trendline" upholstery combination, in variety of patterns	3.620,00 €
	050500 / 27	Leather upholstery, in variety of patterns	4.225,00 €
	050506 / 27	BiColor leather upholstery, in variety of patterns	4.530,00 €
	051305 / 20	Living area carpet in Sisal Sierra or velours colours Coco 830 beige, 865 grey-brown and 2051 chocolate	1.000,00 €
	051311 / 20	Living area carpet in special velours colour	1.150,00 €
	051276 / 05	Decoration package "Trendline" consisting of 8 cushions and Trendline decorative side curtains instead of the standard ones, in variety of patterns	695,00 €
	051271 / 03	Venetian blinds in the living room, pleated blinds in the bedroom	695,00 €
	051272 / 05	Venetian blinds in the living room and in the bedroom	1.200,00 €
	051280 / 05	Sliding curtains in the living room and in the bedroom	1.100,00 €
SERVICE			
	020397 / 0	High-performance paint coating on ceramic basis for optimal paint protection of the side walls, front and rear. Optimal vehicle care and value preservation.	3.015,00 €
	090000 / 0	Vehicle delivery at the factory, with extensive briefing in German language and handover inspection, diesel tank and gas filling, vouchers of 200,00 €, MORELO towel set, 1 x MORELO umbrella, 2 x MORELO cap, 1 x MORELO beep egg, factory tour	2.005,00 €

Prices in Euro (incl. 20% VAT)

¹⁾ weight in kg

Images and descriptions may contain options that are subject to surcharge.



MORELO
FIRST CLASS REISEMOBILE

MORELO Reisemobile GmbH · Helmut-Reimann-Straße 2 · D-96132 Schlüsselfeld · Fon: +49 (0) 95 52 - 9296 00 · www.morelo-reisemobile.de

Subject to technical changes and errors. Please note that some of the illustrations in this catalogue show alternative designs or optional extra fittings, which would incur additional costs. Variations in colour may arise during printing. This document, including extracts thereof, may only be reproduced with the written permission of MORELO Reisemobile GmbH.

The prices listed for vehicles and extras apply to their purchase and licensing in Germany. They are given in Euro and include VAT at 20%. We reserve the right to adjust prices accordingly in the event of VAT increases during the delivery period. All prices represent nonbinding recommendations ex works. Price changes for basic vehicles will cause price adjustments based on the additional price for the basic vehicle. The prices for extras are only valid if they are fitted in the factory and scheduled in due time. Retrofitted extras will incur additional material and assembly costs. Prices include ancillary costs for pre-shipment of the chassis and TÜV certification. Transport costs to abroad or foreign registration costs are not included.

We reserve the right to make technical modifications, providing overall product quality is maintained or improved and there is no restriction in terms of the designated use.

This price list applies to orders as from the 1st of October 2021. All previous price lists will cease to be valid. Errors and omissions excepted.

¹The mass of the vehicle in running order includes: driver (75 kg), full fuel tank, 100 litres of fresh water, full gas bottles and the tool kit. The fitting of extras and accessories may alter the weight and dimensions. All dimensions and weights are based on the knowledge available at the time of going to print.

Deviations of +/- 5% are possible and deemed acceptable.

made with  by BRANDORT